

L'agence

24-25, quai des  
Chartrons  
33080 Bordeaux  
cedex  
05 56 00 94 00

www.2e2f.fr



Agence  
**Europe  
Education  
Formation  
France**



## PRACTICAL DETAILS

---

### COMENIUS CONTACT SEMINAR

**"Let's experiment together against early school leaving!"**

**AMIENS, France / CRDP**

**15 - 18 November 2011**





#### HOW TO GET FUNDS?

To attend a contact seminar, you shall apply for a preparatory visit grant. For detailed information about the grant application form, deadlines and any other requirements applicable at national level, **please contact the National Agency in your own country.**

The list of the National agencies is found at: [http://ec.europa.eu/education/programmes/llp/national\\_en.html](http://ec.europa.eu/education/programmes/llp/national_en.html)

#### REGISTRATION

We can host up to **60 participants** including NA representatives.

**Only participants duly selected and financed by their own National Agency** can participate in the seminar. When formerly approved, participants should return the registration form via e-mail to [elodie.vanouche@2e2f.fr](mailto:elodie.vanouche@2e2f.fr) by **30th of September at the latest.**

#### VENUE

The hotel will be located in the city center close to the seminar venue. Single rooms are booked for the participants.

You will be informed about the precise hotel as soon as possible and at least by the end of September.



#### WHAT IS CRDP?

The working sessions will take place in CRDP, which is the Pedagogical Regional Center. Its principal mission is to create and provide resources on educational issues. We will have an auditorium and many working rooms. Website: <http://crdp.ac-amiens.fr/>

#### WHAT TO PREPARE?

Preparation of the "European fair": the participants are kindly requested to prepare a short presentation about their institution, region and country (pictures, brochures) and to bring some typical culinary products from their region.

Note: if you would like to show a PowerPoint presentation etc., please bring your own computer.

#### HOW TO GET TO AMIENS?

IN ENGLISH: [http://www.visit-amiens.com/preparez\\_votre\\_sejour/les\\_acces](http://www.visit-amiens.com/preparez_votre_sejour/les_acces)

IN FRENCH: [http://www.amiens-tourisme.com/preparez\\_votre\\_sejour/les\\_acces](http://www.amiens-tourisme.com/preparez_votre_sejour/les_acces)

#### WHO TO CONTACT?

*Contact person regarding the location of the seminar and practical details:*

Elodie VANOUCHE

Tel. 00 33 (0)5 56 00 94 75

Email : [elodie.vanouche@2e2f.fr](mailto:elodie.vanouche@2e2f.fr)



L'agence

24-25, quai des  
Chartrons  
33000 Bordeaux  
cedex  
05 56 00 94 00  
www.2e2f.fr

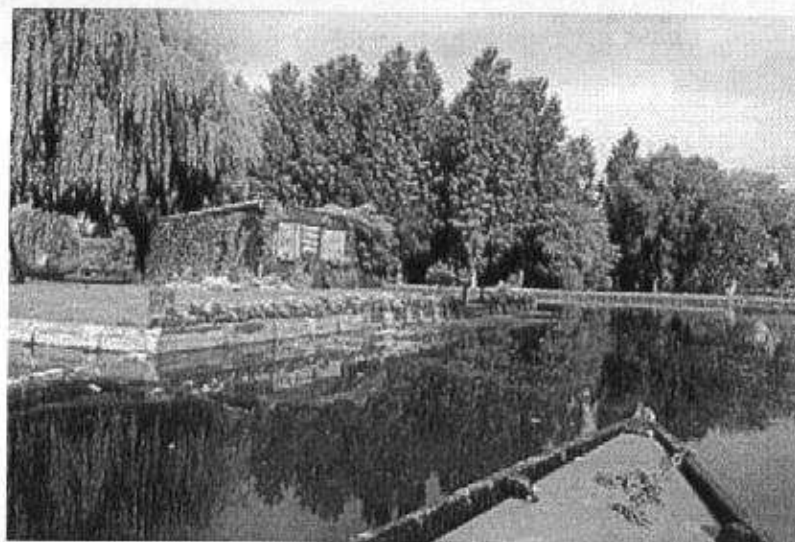
Agence  
**Europe  
Education  
Formation  
France**



## DRAFT AGENDA

---

**COMENIUS CONTACT SEMINAR**  
**"Let's experiment together against early school leaving!"**  
**AMIENS, France / CRDP**  
**15 - 18 November 2011**



2e2f.fr

TUESDAY, NOVEMBER 15

- 14h00 Arrival and registration of the Comenius participants  
19h00 Welcome reception, preparation of the European Fair  
20h00 European Fair and Buffet

WEDNESDAY, NOVEMBER 16

- 09h00 Registration of the participants  
09h00 – 09h30 Official opening of the seminar  
09h30 – 09h45 Introduction to the seminar (aims, methodology, practical information)  
09h45 – 10h00 Presentation of the Comenius Programme  
10h00 – 11h00 Presentation of good practices concerning Early School Leaving  
11h00 – 11h30 Coffee break  
11h30 – 12h45 Brainstorming on project ideas and creation of working groups  
12h45 – 14h00 Lunch  
14h00 – 15h30 Working groups: aims, activities and expected results of your project  
15h30 – 15h45 Coffee break  
15h45 – 17h30 Working groups  
19h30 Dinner

THURSDAY, NOVEMBER 17

- 09h00 – 09h30 Opening by the French Ministry of Education  
09h30 – 11h00 Early School Leaving: State of the art, presentation by 2 experts  
11h00 – 11h30 Coffee break  
11h30 – 12h30 Recommendation and "Action Plan": presentation by the European commission  
12h30 – 13h00 Key elements of a good Project – Application process for Comenius partnerships  
13h00 – 14h00 Lunch  
14h00 – 16h00 Working groups  
16h15 – 16h30 Coffee break  
16h30 – 17h30 Working groups  
19h30 – 20h30 Dinner  
20h30 – 22h30 Cultural event

FRIDAY, NOVEMBER 18

- 09h00 – 10h00 Finalising and Preparing presentation of draft projects  
10h00 – 10h30 Coffee break  
10h30 – 12h30 Presentation of draft projects during the Round table on Early School Leaving  
12h30 – 13h00 Official closing  
13h00 Farewell lunch and departure of participants